



USER GUIDE

Market-Watch Tool

Version 3
January 2010

DisnatDirect
1170, rue Peel
Bureau 105
Montreal (Québec) H3B 0A9

1.0 DDQuotes Installation

DDQuotes installation is a user friendly process designed to allow any person no matter how computer literate to install (and uninstall if necessary) the software. Just follow the detailed instructions below to install the DDQuotes Software.

1.1 System Requirements

Before installing DDQuotes, be sure your system meets these minimum requirements:

- Operating System: Windows 2000, XP (recommended) or Vista
- CPU: Pentium III 500 MhZ (Pentium IV recommended)
- Memory: 128 MB RAM (256 MB recommended)
- Video Card: PCI or AGP video card with 32 MB RAM on the video card (more powerful video cards will further improve performance)
- Internet Connectivity: DSL, Cable Modem or other high bandwidth solution

Attempting to operate DDQuotes on a PC, which does not meet the minimum requirements above, will result in system instability. Such symptoms as freezing, loss of Internet connectivity, increased lag times in the delivery of market data, and other negative consequences may be experienced.

1.2 Installing from the web

- Follow the link on DisnatDirect's website to download the DDQuotes file.
- When prompted, select "Save file to disk", and select an easy-to find location for the file (such as your desktop).



Figure 1.0

- After saving the file, double-click on DDQuotes.exe Icon (see above figure 1.0) to launch the installer.
- Accept the license agreement, and follow the instructions to complete the installation. By Default the program will be installed in "C:\Program Files\Disnat Direct\DDQuotes" but the location can be altered during the installation if desired.



Figure 1.1

- Once the install is complete, the DDQuotes shortcut icon will be on your desktop (see above figure 1.1), and in your Windows Start Menu.

If the DDQuotes installer is running and DDQuotes is already installed on the PC, then an uninstall process will run instead. Once uninstall is complete, run the DDQuotes installer again to perform the installation.

2.0 Basics

To learn to navigate through DDQuotes let's begin with the basics. Some topics that are covered are: logging-in, setting and saving the screen layouts, menu choices and functions, icons, printing, and more.

2.1 System Login

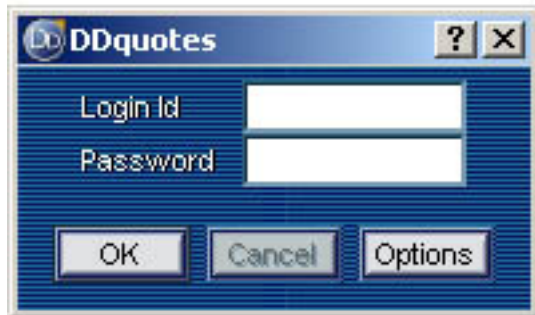


Figure 2.1

When DDQuotes is launched, the system login box appears after the software load is completed. Once a valid User ID and Password are entered, clicking OK will launch the DDQuotes interface and establish the server connection.



Figure 2.2

The "Options" button allows for the DDQuotes Network address to be changed before the login request is submitted. This should NEVER be changed unless specifically ordered by Technical Support. Changing the network server address can result in an inability to connect to the DDQuotes Servers, rendering executions and/or quote data unattainable. Exercise extreme caution with this setting.

2.2 File Menu

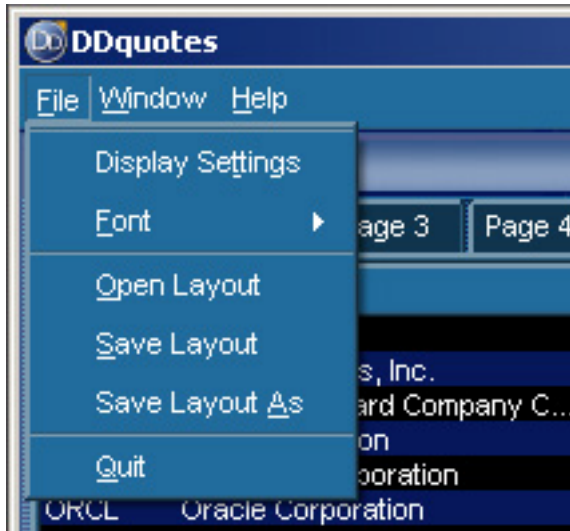


Figure 2.4

File Menu is found at the upper left hand corner of your DDQuotes window. It contains the following choices:

- **Display Settings:** Launches the Settings dialog box. This utility allows you to customize many of the settings that govern the overall look and feel of DDQuotes as well as default values for many of the variables. (For detailed explanation see section 2.3.1 Settings)
- **Font:** allows you to choose the default font, font style and font size for the DDQuotes application.
- **Open Layout:** Allows you to use a saved setting from a previous time or different user. (For detailed explanation see section 2.3.2 Font)
- **Save Layout:** Updates the settings file for the current user. This includes the size and location of all active modules, the stock symbols in each module, the setting values for all application variables, etc. Different settings files are kept for each Login ID on the local PC. If you are logged into multiple accounts, then the settings are saved under the first Login ID (the account on the left-most tab in the Account Box). (For detailed explanation see section 2.3.3 Save Settings)
- **Save Layout As:** Saves current settings file under a specific name chosen by you. (For detailed explanation see section 2.3.3 Save Settings)
- **Quit:** Exits the application. If any settings variables have changed since they were last saved, then a Save Settings dialog box will pop-up before exiting.

2.3.1 Settings

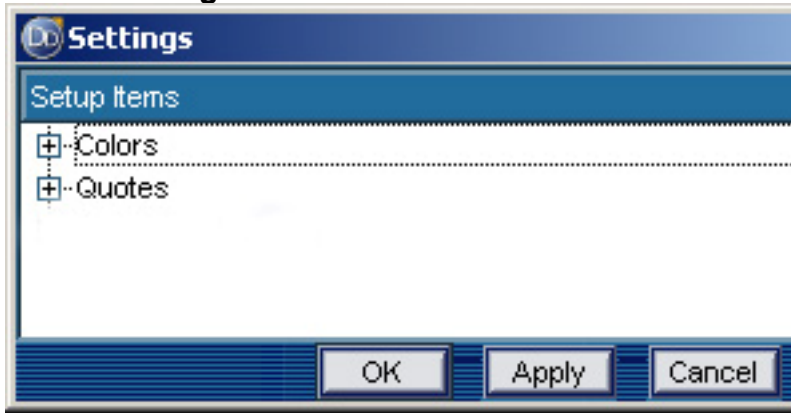


Figure 2.5

Settings menu allows you to change Colors and Quote Information. When changing the settings, click [OK] then [Apply] to save the choices, or [Cancel] to exit without saving. Clicking the [Apply] button will instantly implement the new settings, and will therefore cause the application to flicker momentarily while DDQuotes is reinitialized.

2.3.1.1 Colors

All colors can be changed using this menu. Be sure not to change the Background color to the same color as your text color. If this is done you will not see any important quotes or messages.

- **Default Background Color:** Color of all windows background.
- **Default Shade Color:**
- **Default Text Color:** Color of Text except Text with specific Color settings.
- **Option In the Money Color:** Color of option contracts that are in the money. makers in the level 2 found in the stock boxes

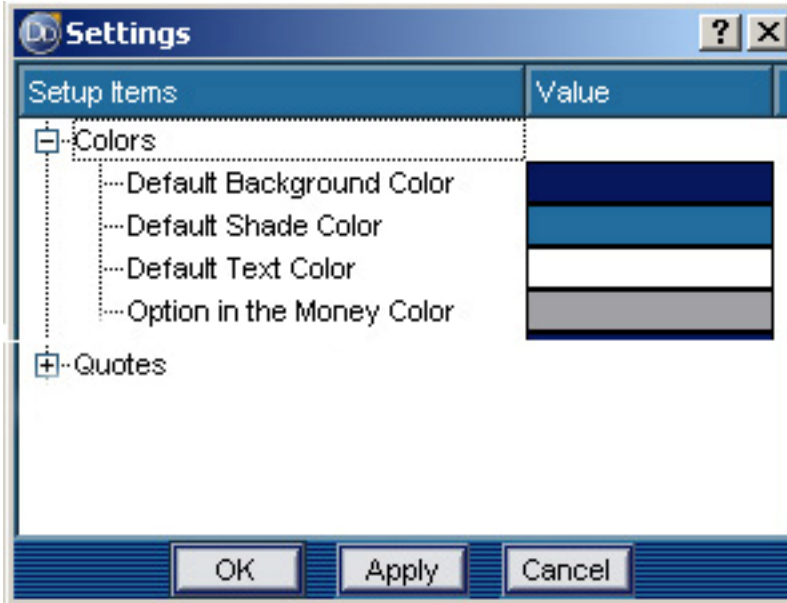


Figure 2.6

2.3.2 Font

All the fonts found in DDQuotes can be changed to suit your needs or preferences. To change the font click on file then font (see figure 2.13). There are two choices system, which is for all fonts not found in a level 2 screens or montage, and Montage. Select one of the two choices to change the font. A window will pop up. (See figure below)

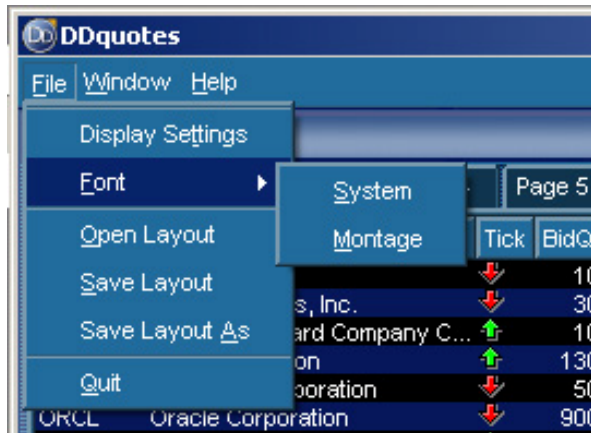


Figure 2.13

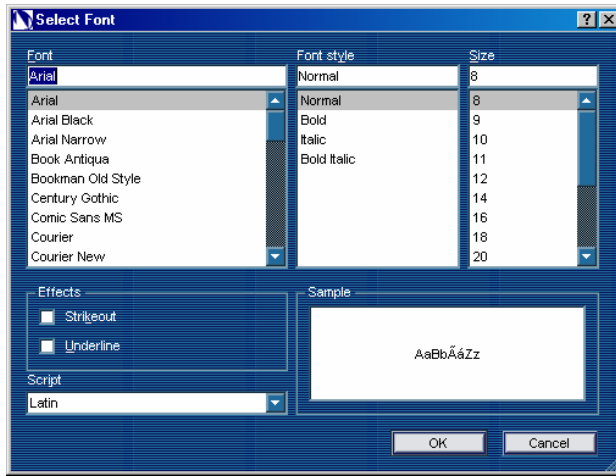


Figure 2.14

You have the choice to change Font, Font Style, Size, Effects, and Script. Color of the font can be found in section 2.3.1.1 Color. Once all changes have been made click [OK] to save or [Cancel] to delete changes.

2.3.3 Save Settings

Once all settings have been made and the windows are in positions you like then you can save the current settings as a file to be retrieved later. You or any one else that likes that layout then can use the file. To open a file click on File then Open Layout. Once this has been done a window will appear. (See figure 2.15)

You must select the settings file you wish to use. Click on the file name to select then open to use that file setting.

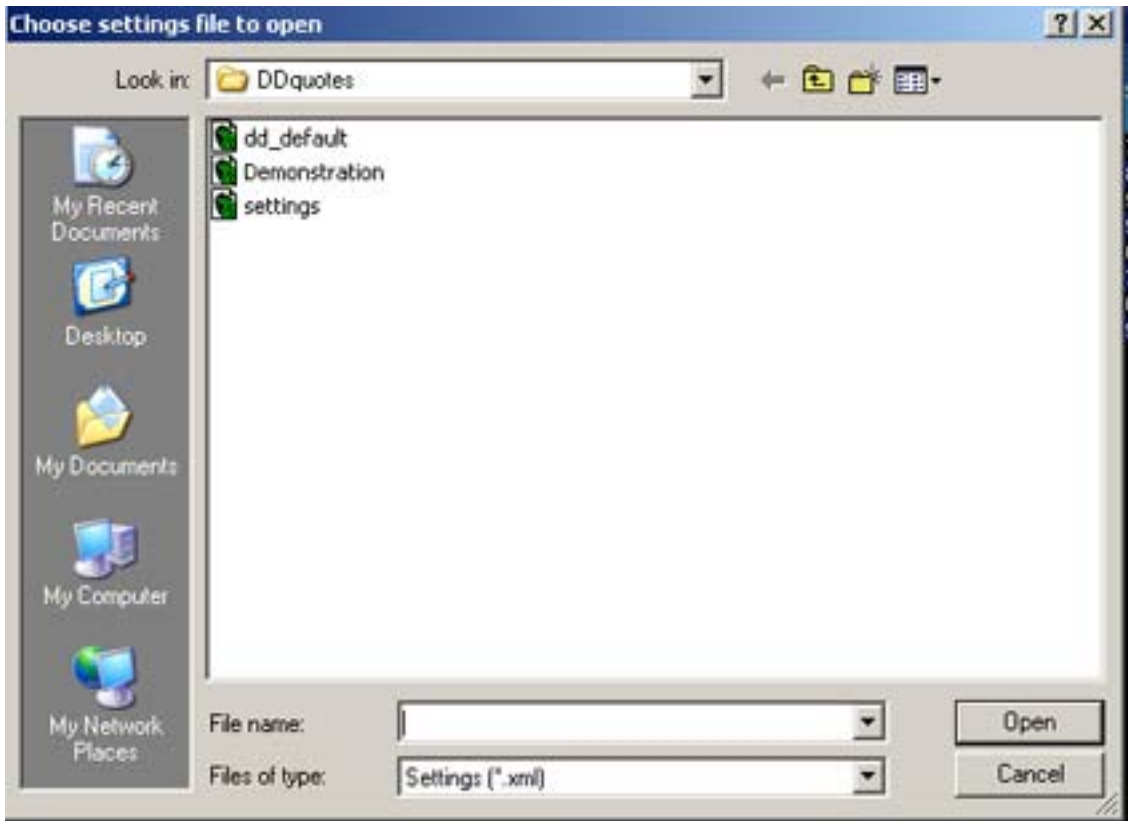


Figure 2.15

To save a setting, click Save Layout. If you have not named your current setting it will default to a generic name.

If you use the Save Layout As you can name your setting to your own personalized name. DisnatDirect recommends that you name your layout under a personal name.

2.4 Window Menu

The Window menu is used to control the presence or absence of DDQuotes modules and Tool Bars, as well as special layout management features.

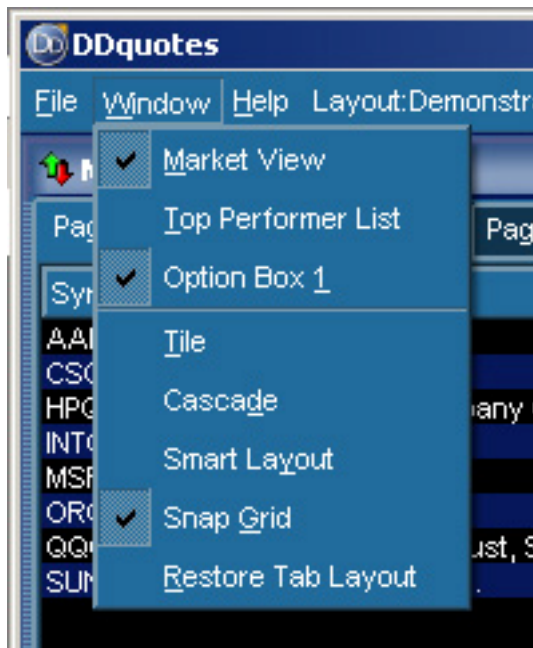


Figure 2.16

- **Modules:** the top section of the menu lists individual DDQuotes modules, and allows the user to toggle them on and off. A check box to the left of a module indicates that it is active and visible within the application.
- **Layout Management:** – the four selections in the bottom section of the menu provide different types of layout control:
 - **Tile:** this selection will arrange all open modules by assigning each module roughly equal screen space. All modules will be visible but their size will not necessarily make sense relative to their function.
 - **Cascade:** this choice will take all open modules and arrange them one on top of the other, so that the title bar for each is visible. This layout does not make sense for usability, but it can be a useful starting point to see all of the open modules so that they can then be manually moved and arranged.
 - **Smart Layout:** using elements of both Tile and Cascade, with more intelligence, this feature arranges the open modules in a way that tries to increase their usability. The modules are each sized and placed according to use and importance. Additionally, if more Charts or Stock Boxes are active than can reasonably be displayed simultaneously, DDQuotes will Cascade the Charts and Stock Boxes within a specific area, while Tiling other modules.
 - **Snap Grid:** this feature toggles on and off, and helps the user line up the corners and edges of the various modules. When Snap Grid is active, and a module is resized, or dragged and dropped, it will snap into a position relative to the edges and corners of the surrounding windows.

2.5 Windows Management

Basic window controls:

Window Controls: within the DDQuotes application, each window, or module, has its own set of controls. These are the standard Microsoft Windows capabilities, and include Minimize, Maximize/Restore, and Exit buttons in the upper right corner of each module. Each module may also be resized by clicking and dragging on its edges or corners, or the entire module can be moved by clicking and dragging on its title bar.

Drag & Drop Functionality: Stock Symbols may be “dragged and dropped” from one module to another throughout DDQuotes.

3 Option Box

Strike	Symbol	Last	Chg	Bid	Ask	Vol	Opn Int	Status	Delta	Gamma
25.00 USD	MSQ 100320C00025.000	5.20		5.15	5.25	11	0		1.00	
26.00 USD	MSQ 100320C00026.000	4.55		4.20	4.30		6		1.00	
27.00 USD	MSQ 100320C00027.000	3.25	-0.35	3.30	3.40	21	1		1.00	
28.00 USD	MSQ 100320C00028.000	2.53	-0.25	2.52	2.54	444	90		1.00	
29.00 USD	MSQ 100320C00029.000	1.77	-0.26	1.80	1.81	470	374		1.00	
30.00 USD	MSQ 100320C00030.000	1.19	-0.26	1.21	1.22	965	604		0.683	0.19
31.00 USD	MSQ 100320C00031.000	0.76	-0.11	0.76	0.77	279	2084		0.482	0.187
32.00 USD	MSQ 100320C00032.000	0.44	-0.08	0.45	0.46	275	658		0.322	0.157
33.00 USD	MSQ 100320C00033.000	0.25	-0.05	0.25	0.26	443	1183		0.202	0.118
34.00 USD	MSQ 100320C00034.000	0.15		0.13	0.15	21	12		0.125	0.082
35.00 USD	MSQ 100320C00035.000			0.07	0.08		0		0.072	0.053

Option Box Interface:

Figure 4.11

- A. **Underlying Symbol:** Symbol for the underlying stock
- B. **Option Strike Month:** Month of expiration on contracts being traded.
- C. **Option Symbol:** Symbol of Option you wish to trade.
- D. **Tabs:** Activity Tabs to switch between Calls Puts and Option Montage.
- E. **Columns:** Quote Data Columns
- F. **Option Chains:** Chain for the symbol in the underlying symbol box for the month chosen.

3.2.1 Option Box Basics

The DDQuotes Option Box presents detailed real-time option chains in an easy-to-use format.

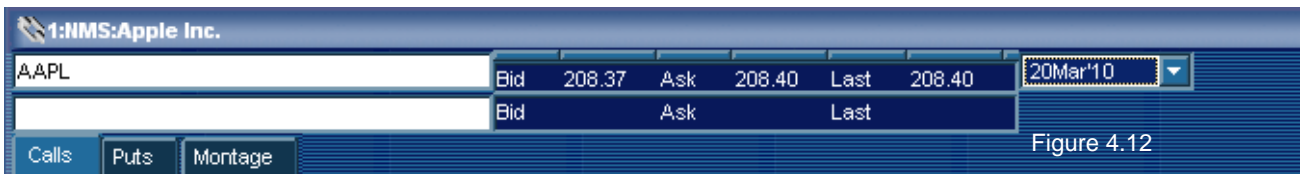


Figure 4.12

As seen in the figure above, the Option Box consists of a header area with Level I quote information of the underlying stock and a if a option is chosen the level I quote for the option symbol, and a drop down to chose the strike month for the option montage below.

The Option Box Header contains two symbol fields in the upper left corner – one for the underlying and one for the specific contract. By entering the underlying symbol in the first field (“AAPL” in the figure above), the corresponding option chain will be displayed in the tabbed area below, with Call contracts on the first tab and Put contracts on the second. The Bid, Ask, and Last price for the underlying equity are also displayed to the right of the top symbol field.



Figure 4.13

Click on one of the Calls or Puts in order to load the contract symbol in the second field and activate the corresponding quote feed. This will populate the Bid, Ask and Last prices for the contract in the Level I area to the right of the contract symbol, will make the depth of book data visible in the Montage on the third tab, and place the option symbol in the Order execution box for you to trade.

In order to place an options order, or use the montage feature, a specific contract (Call or Put) MUST be selected and visible in the second symbol field.

The Contract Month drop-down is visible in the top right corner of the Option Box. This field allows a specific month to be selected, beginning with the current month, for which the option chain will be displayed. Or choose “ALL” from the drop-down to display all Option Chain data for all available months, organized into monthly folders.

Option menu pop-up

- **Strike:** strike price
- **Symbol:** Option Symbol.
- **Close:** previous day’s closing price. The last official print during market hours
- **Open:** today’s opening price .The first official print at the open of market hours.

- **Chg**: the change in price. By default this is calculated by comparing the “Last” price to the “Close”. However, the “Chg” calculation can be set to compare “Last” against the “Open” price in the Setup Utility.
- **High**: the highest intra-day price.
- **Low**: the lowest intra-day price.
- **Vol**: the volume of share traded in this symbol.
- **Bid**: the current Best Bid.
- **BidQ**: the Best Bid quantity.
- **Ask**: the current Best Ask.
- **AskQ**: the Best Ask quantity.
- **Last**: the most recent price to print in Time & Sales
- **%**: the change in price shown in a percentage form instead of a dollar figure. By default this is calculated by comparing the “Last” price to the “Close”. However, the “Chg” calculation can be set to compare “Last” against the “Open” price in the Setup Utility.
- **Opn Int**: the total number of outstanding contracts at the end of the day.

3.5 Market View

Figure 4.15

Symb	Tick	Last	Chg	%	Bid	BidQ	Ask	AskQ	H
AAPL	↑	27.09	-0.74	-2.65%	27.08	300	27.09	900	
AMAT	↓	21.99	-0.34	-1.52%	21.99	56400	22.00	37500	
CSCO	↓	24.13	-0.52	-2.10%	24.13	900	24.13	34000	
DELL	↑	34.42	-0.27	-0.77%	34.42	3500	34.42	5800	
INTC	↑	27.53	-0.74	-2.61%	27.52	27100	27.53	2100	
MSFT	↓	25.58	-0.22	-0.85%	25.58	128300	25.59	37900	
ORCL	↑	12.30	-0.16	-1.28%	12.29	114900	12.30	117100	
QQQ	↓	36.69	-0.29	-0.78%	36.70	51000	36.70	10000	
SUNW	↓	4.70	-0.10	-2.08%	4.70	287000	4.71	295500	
WDC	↑	11.07	-0.35	-3.06%	11.06	15000	11.07	2400	

The DDQuotes Market View module provides streaming Level I data on hundreds of user-defined symbols. It allows for the symbols to be organized into manageable tabs so that market sectors or favorite traded symbols can be monitored together at a glance.

3.5.1 Adding and Deleting Symbols:

Adding symbols in the Market Viewer can be accomplished one of two ways:

- to add symbols right-click in the main body of the desired tab and choose “Add” from the pop-up menu. Type a valid symbol into the highlighted entry field, and press [ENTER] to move to the next line for entering multiple symbols.



Figure 4.16

Symb	Tick	Last	Chg	%	Bid	BidQ	Ask	AskQ	H
AAPL	↑	27.09	-0.74	-2.65%	27.08	300	27.09	900	
AMAT	↓	21.99	-0.34	-1.52%	21.99	56400	22.00	37500	
CSCO	↓	24.13	-0.52	-2.10%	24.13	900	24.13	34000	
DELL	↑	34.42	-0.27	-0.77%	34.42	3500	34.42	5800	
INTC	↑	27.53	-0.74	-2.61%	27.52	27100	27.53	2100	
MSFT	↓	25.58	-0.22	-0.85%	25.58	128300	25.59	37900	
ORCL	↑	12.30	-0.16	-1.28%	12.29	114900	12.30	117100	
QQQ	↓	36.69	-0.29	-0.78%	36.70	51000	36.70	10000	
SUNW	↓	4.70	-0.10	-2.06%	4.70	287000	4.71	295500	
WDC	↑	11.07	-0.35	-3.06%	11.06	15000	11.07	2400	

- Or click and Highlight on an empty row below a symbol as shown above, type in the symbol then press the [ENTER] key.

Deleting symbols in the Market Viewer can be accomplished one of two ways:

- To delete a symbol right-click on the desired symbol when the menu comes up click “Delete”.



Figure 4.17

Symb	Tick	Last	Chg	%	Bid	BidQ	Ask	AskQ	H
AAPL	↑	27.09	-0.74	-2.65%	27.08	300	27.09	900	
AMAT	↓	21.99	-0.34	-1.52%	21.99	56400	22.00	37500	
CSCO	↓	24.13	-0.52	-2.10%	24.13	900	24.13	34000	
DELL	↑	34.42	-0.27	-0.77%	34.42	3500	34.42	5800	
INTC	↑	27.53	-0.74	-2.61%	27.52	27100	27.53	2100	
MSFT	↓	25.58	-0.22	-0.85%	25.58	128300	25.59	37900	
ORCL	↑	12.30	-0.16	-1.28%	12.29	114900	12.30	117100	
QQQ	↓	36.69	-0.29	-0.78%	36.70	51000	36.70	10000	
SUNW	↓	4.70	-0.10	-2.06%	4.70	287000	4.71	295500	
WDC	↑	11.07	-0.35	-3.06%	11.06	15000	11.07	2400	

- Or click and Highlight the symbol you wish to delete as shown above, press the [Delete] Key then press the [ENTER] key

3.5.2 Pop-up Menu

Right-click in the main body of the desired tab in the Market view module to bring up the viewer's menu:



Figure 4.18

Add: adds symbol.

Delete: deletes symbol.

Rename: renames symbol

Paste: populates field with copied text.

Alert: notification a specific event occurred on selected symbol..

Reset Alert: reset alert to look for another event on selected symbol.

Delete Alert: removes alert from symbol.

Move Up: when sort market view is not selected symbols can be moved up.

Move Down: when sort market view is not selected symbols can be moved down.

Insert Blank: when sort market view is not selected a space can be made to separate grouped symbols.

Columns: the Market View right-click menu includes both a “**Columns**” choices and a “**Smart Width**” feature, which function exactly as in all other modules. Use “**Columns**” to determine which columns are visible and in what order, and use “**Smart Width**” to space the visible columns efficiently.

Print: prints out Market Viewer

Export: exports market view to a CSV file

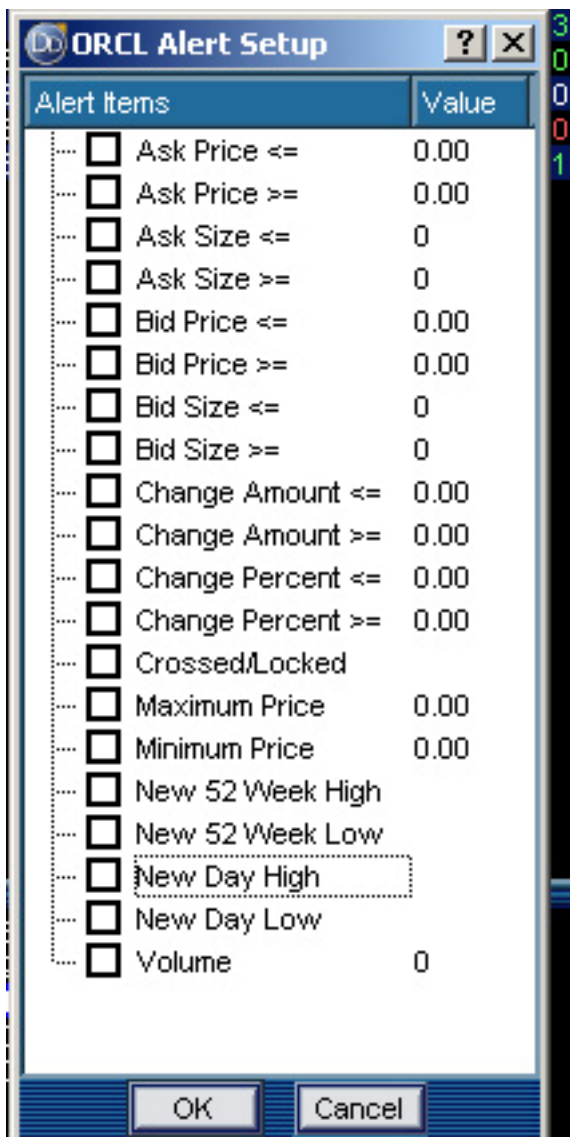
Smart Width: expands or reduces the columns to fit in the window. If the window is too small the columns will expand only big enough to view all data.

Colors: color settings

Font: font settings

3.5.3 Setting an Alert

Alerts: alerts can be set on symbols in the Market View as follows:



1. Right-click on the symbol to be monitored and select "Alert".
2. In the Alert Setup box check any combination of the desired alerts and enter the values associated with your requests in the VALUE column:

Ask Price Above / Below

Ask Size Above / Below

Bid Price Above / Below

Bid Size Above / Below

Change Amount

Change Percent

Crossed/Locked

Maximum Price

Minimum Price

New 52 Week High / Low

New High / Low (intra-day)

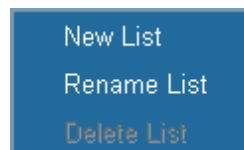
Volume Above

3. Click OK to save the settings and note that a red alert arrow will appear next to the symbol on which the alert has been activated.
4. When the monitored event occurs (i.e. the symbol makes a new high or new low or is crossed/locked) a detailed alert box will pop-up and a tone will sound. The symbol, which generated the alert, will flash red in the Market View window.
5. To remove and disable the alert, right-click on the symbol and select "Delete Alert".
6. To reset the alert after it is triggered, so that the symbol stops flashing and the next event can be detected, right click on the symbol and choose "Reset Alert".

Alerts will function for any selected symbol, whether the tab that contains the symbol is currently visible or not.

3.6 Market View Tabs

Tabs: Right-click in the header area of the Market View module to manage the user-defined tabs.



New List – adds a new tab to the module and asks the user to enter the tab name.

Rename List – allows the user to enter a new name for the selected tab.

Delete List – removes the specific tab and all of its contents.

The Market View tabs are each independent in their settings. Each tab may have different columns, different column orders, and different sort orders.

The Market View module limits are as follows:

Maximum Tabs = 10

Maximum Symbols per Tab = 30 (for a total of 300)

Maximum Alerts = 15 (for the entire module NOT per tab)

4.0 Top Performer List

From the 'window' menu, you can start the 'Top Performer List' window. This section allows the client to sort the market data to find the stocks that have the most significant values. By choosing a specific criterion in the first drop-down menu (to the left), you can isolate the ten most significant stocks to fit that criterion. You can also choose a specific market that you wish to sort by using the second drop-down menu (to the right).



The screenshot shows the 'DDquotes' application window with the 'Top Performer List' sub-window. The sub-window has a menu bar with 'File', 'Window', and 'Help'. Below the menu bar, there are two drop-down menus: 'Top % Gainers' and 'NYSE'. The main area displays a table of stock data with the following columns: Symb, Tick, Last, Chg, %, Bid, BidQ, Ask, and A. The table lists ten stocks with their respective values and percentage changes. A connection status indicator is visible at the bottom left of the window.

Symb	Tick	Last	Chg	%	Bid	BidQ	Ask	A
NL	↑	13.51	+1.39	+11.46%	13.23	200	17.00	
TOA	↑	4.40	+0.39	+9.72%	4.26	2500	4.35	
MZ	↑	0.70	+0.06	+9.37%				
CGI	↑	34.01	+2.75	+8.79%	19.40	100	34.50	
ELY	↓	18.40	+1.38	+8.10%	17.63	100	19.75	
CYD	↑	9.21	+0.66	+7.71%	8.72	500	9.45	
LAD	↑	29.00	+1.96	+7.24%	28.21	100	29.87	
NMAWS	↓	3.20	+0.21	+7.02%				
BCE	↓	34.17	+2.10	+6.54%	34.20	100	34.29	
GCO	↑	43.54	+2.66	+6.50%	38.02	100	50.50	